

*CEDAR RAPIDS, IOWA*



J.E. ADAMS INDUSTRIES  
OWNERS MANUAL

MODEL 9500 SERIES

- PAGE 2                      PRODUCT INFORMATION
- PAGE 3                      SPECIFICATIONS
- PAGE 3                      IMPORTANT SAFETY INFORMATION
- PAGES 4-5                  INSTALLATION
- PAGES 5-6                  PROGRAMMING
- PAGE 6                      OPERATING
- PAGE 6-7                  MAINTENANCE
- PAGES 7-8                  TROUBLESHOOTING
- PAGES 9-12                PARTS LIST
- PAGE 13                    WIRE DIAGRAMS

# **PRODUCT INFORMATION**

**Please take a moment to fill out the information below in order to aid us with any future sales or service inquiries. Model number and serial number information can be found on the serial tag located inside the control box and/or on the lower exterior of the can. Key number can be found on the tag that comes attached to the keys. There may be more than one key number depending on unit.**

**Please keep this information with your records.**

**MODEL#:**\_\_\_\_\_

**SERIAL#:**\_\_\_\_\_

**KEY NUMBER(S):**\_\_\_\_\_

**DATE PURCHASED:**\_\_\_\_\_

**DISTRIBUTOR:**\_\_\_\_\_

**J.E. Adams Industries  
1025 63<sup>rd</sup> Ave. S.W.  
Cedar Rapids, IA 52404  
1-800-553-8861  
[www.jeadams.com](http://www.jeadams.com)**

## SPECIFICATIONS:

### Unit specifications:

Voltage: 110v, 60Hz

Amperage: (1)20 amp service is required for this unit

Weight: 195 lbs with pallet attached

### Vac specifications:

Motors: (2) Ametek 110v motors

Fuses: (2) 10 amp fuses

Relays: (1) DPDT 20 amp rating per contact

### Shampoo/spot specifications:

Compressor: (1) Thomas 110v, 1/12<sup>th</sup> hp compressor

Peristaltic pump: (2) Thomas peristaltic pumps, 12VDC

Relays: (2) DPDT 20 amp rating per contact

NOTE: "UNIT INTENDED FOR COMMERCIAL USE ONLY"

## IMPORTANT SAFETY INSTRUCTIONS

When using an electrical appliance, basic precautions should always be followed, including the following:

## READ ALL INSTRUCTIONS BEFORE USING (THIS APPLIANCE)

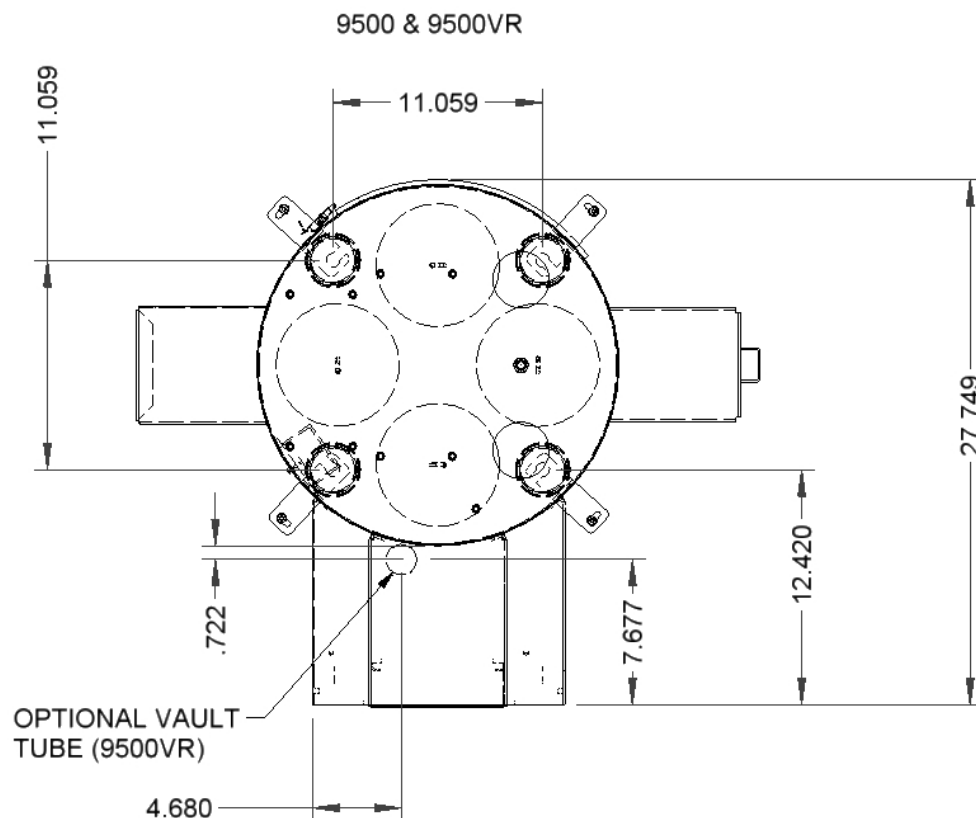
## WARNING – To reduce the risk of fire, electric shock, or injury:

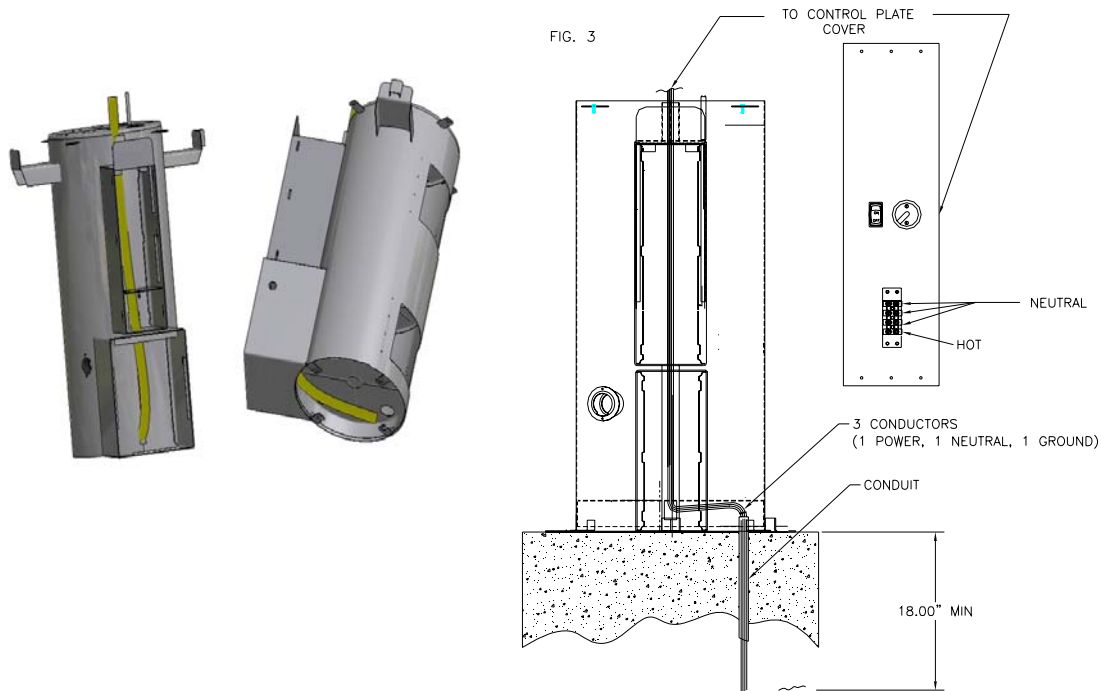
- Do not use on wet surfaces.
- Use only as described in manual. Use only manufactures recommended attachments.
- Do not allow to be used as a toy. Close attention is necessary when used by or near children.
- Do not put any object into openings. Do not use with any opening blocked; keep free of dust, lint, hair and anything that may reduce air flow.
- Keep hair, loose clothing, fingers, and all parts of body away from openings and moving parts.
- Do not use to pick up flammable or combustible liquids, such as gasoline, or use in areas where they may be present.
- "Do not pick up anything that is burning or smoking, such as cigarettes, matches, or hot ashes."
- "DO not use without dust bag and/or filters in place."

## SAVE THESE INSTRUCTIONS

## Installation Instructions:

- Determine location to mount unit ("**DANGER**" **"THIS EQUIPMENT INCORPORATES PARTS SUCH AS SWITCHES, MOTORS, OR THE LIKE THAT TEND TO PRODUCE ARCS OR SPARKS THAT CAN CAUSE AN EXPLOSION. WHEN LOCATED IN GASOLINE-DISPENSING AND SERVICE STATIONS INSTALL AND USE AT LEAST 20 FEET (6 M) HORIZONTALLY FROM THE EXTERIOR ENCLOSURE OF ANY DISPENSING PUMP AND AT LEAST 18 INCHES (450 MM) ABOVE A DRIVEWAY OR GROUND LEVEL."**)
- Run 20amp wire service to location underneath canister. Run wire to top of unit as shown in fig. 3
- **Grounding Instructions:** This appliance must be connected to a grounded metal, permanent wiring system; or an equipment-grounding conductor must be run with the circuit conductors and connected to the equipment-grounding terminal or lead on the appliance.
- Mount unit to location using diagram below for mount pattern.
- If unit is vault ready see optional vault tube location.





- Once unit has been installed use the black 5871B8 cap plugs (qty 4) supplied with unit to seal holes in canister bottom located in lower cleanout door. Then connect to power, insert shampoo and spot formula into bottom door and attach lids to appropriate bottles.
- Turn unit on and move to program instructions.

## Programming Instructions:

### Coin acceptor:

- No programming to acceptor needed if unit was purchased with the standard Imomex Z32 electronic acceptor (8149-92 our part number) is pre-programmed to accept US quarters, .984 tokens, US \$1 coin and 1.073 token. Acceptor is pre-programmed before it is sent to J.E. Adams.
- If different acceptor was purchased, see additional literature sent along with unit for programming info.

### Bill acceptor:

- Bill acceptor comes pre programmed from J.E. Adams and should not require any changes. If additional programming is needed to acceptors please refer to additional literature sent along with this unit.

### Display:

- Unit may be programmed when received depending on information given at that the time of order.
- To program follow the instructions below.

### Display programming with remote:

- 1) TO PROGRAM, POWER MUST BE TURNED ON.

- 2) INSERT PLUG INTO BACK OF DISPLAY AND PRESS THE EDIT KEY ON REMOTE PAD.
- 3) THE TIMER WILL DISPLAY "TOTAL COINS". THIS IS THE AMOUNT OF COINS THAT HAVE BEEN PUT THROUGH MACHINE SINCE THE LAST TIME IT WAS ZEROED OUT. TO ZERO, PRESS DELETE KEY. TO SAVE, PRESS THE SAVE KEY. THE UNIT WILL NOW DISPLAY "SAVED". THIS FUNCTION ALLOWS YOU TO MONITOR THE AMOUNT OF COINS THE MACHINE TAKES.
- 4) NEXT, THE TIMER WILL DISPLAY "COINS TO START". USE THE UP AND DOWN ARROW KEYS TO CHANGE THE AMOUNT OF COINS TO START. PRESS THE SAVE KEY TO SAVE YOUR INPUT. THE DISPLAY WILL CONFIRM THIS BY DISPLAYING THE WORD "SAVED".
- 5) TIMER WILL NOW DISPLAY "COINS TO START B". FOLLOW THE SAME PROCEDURE AS STEP D.
- 6) THE TIMER NOW DISPLAYS "CYCLE TIME". TO CHANGE THIS TIME IN 10 SECOND INTERVALS, PRESS THE LEFT  
ARROW KEY. THEN PRESS THE UP AND DOWN ARROW  
KEYS TO CHANGE TIME. TO CHANGE TIME BY ONE  
SECOND INTERVALS, PRESS THE RIGHT ARROW KEY. THEN  
PRESS THE UP AND DOWN ARROW KEYS TO CHANGE TIME.  
TO SAVE THE "CYCLE TIME", PRESS THE SAVE KEY. THE  
TIMER WILL NOW READ "SAVED".
- 7) TIMER NOW DISPLAYS "CYCLE TIME B". FOLLOW SAME PROCEDURE AS STEP 6.
- 8) TIMER NOW READS "LAST COIN BEEP". CHANGE REPLY FROM 10 SEC TO 1 MIN OR VICE VERSA BY PRESSING THE "N" KEY. TO SAVE THE DESIRED "LAST COIN BEEP", PRESS THE SAVE KEY.
- 9) THE "WELCOME MESSAGE" WILL NOW APPEAR WITH THE CHARACTER LOCATED IN THE CENTER OF THE BOARD. IF THE CHARACTER IS BLANK, USE THE UP AND DOWN KEYS. YOU HAVE 36 PLACES TO PUT CHARACTERS. TO MOVE THE MESSAGE LEFT ONE SPACE, PRESS LEFT ARROW KEY. TO INSERT A CHARACTER, PRESS THE INSERT KEY. TO DELETE A CHARACTER, PRESS THE DELETE KEY. TO SAVE MESSAGE, PRESS THE SAVE KEY.
- 10) NOW THE "SALES" MESSAGE WILL APPEAR. IT ALSO HAS 36 CHARACTERS. FOLLOW THE SAME PROCEDURE AS IN STEP 9. THE SALES MESSAGE WILL CONNECT TO THE END OF THE WELCOME MESSAGE.
- 11) NOW THE "EXIT MESSAGE" WILL APPEAR. IT ALSO HAS 36 CHARACTERS. FOLLOW THE SAME PROCEDURE AS STEP 9. NOTE THE WELCOME MESSAGE AND SALES MESSAGE SCROLL ON THE DISPLAY AT ALL TIMES. THE EXIT MESSAGE SCROLLS THREE TIMES AFTER THE TIMER HAS TIMED OUT.
- 12) DISCONNECT REMOTE FROM DISPLAY. DISPLAY IS NOW PROGRAMED AND READY FOR USE.

## Operating Instructions:

- Select desired function.
- Insert coins or bills to start desired function.
- If shampoo/spot is selected, it is recommended that you vacuum before applying formula.
- If other function is selected other than original selected item unit will recalculate timer based on the amount of money it takes to start the specific function.
- Once service is used, hang up hose.

## Maintenance:

- Filter bags should be taken out weekly and shaken out. Also it might be a good idea to keep a new set of bags on hand so that once a month or longer you can take original bags out and wash them.
- Check vac hose for cracks on a weekly basis.

- Check shampoo and spot formula bottles to assure they are full.
- Clean canister with a stainless steel cleaner as needed.
- Check motor brushes approx. every 3 months for excessive wear. Motor brushes should be changed if they are shorter than ¼". ***Please disconnect power before doing this.***
- Check all shampoo lines and assembly for any signs of wear.
- All servicing of machine should be conducted by an authorized service representative.

## Troubleshooting:

### ***DISCONNECT POWER BEFORE SERVICING***

<b>Problem</b>	<b>Possible cause</b>	<b>Solution</b>
Unit is not powered	Power switch under dome of unit is not in the on position	Flip switch to on
Display is not powering	Power switch under dome of unit is not in the on position	Flip switch to on
	Check transformer inside main power box in unit. Is there 24VAC at output terminal?	Replace transformer (8131-2)
Display reads "fail"	Coin acceptor putting out continuous pulse	Press mode button on display. If fail does not go away replace coin acceptor. (8149-92)
	Program in display may be lost	Reprogram display. If fail goes away and then comes back, replace battery in display.
Unit keeps blowing my breaker from my incoming power source	Inadequate wire size supplied to machine	Call electrician and install proper wire size for 20amp service versus length or run.
	Wrong size breaker	Install correct breaker( only use wire size that is adequate to handle 20 amp breaker)
Fuses for vac motors keep blowing.	Inadequate wire size supplied to machine	Call electrician and install proper wire size for 20amp service versus length or run.
	Motor brushes may be bad or too short	Replace motor brushes (8055BR)

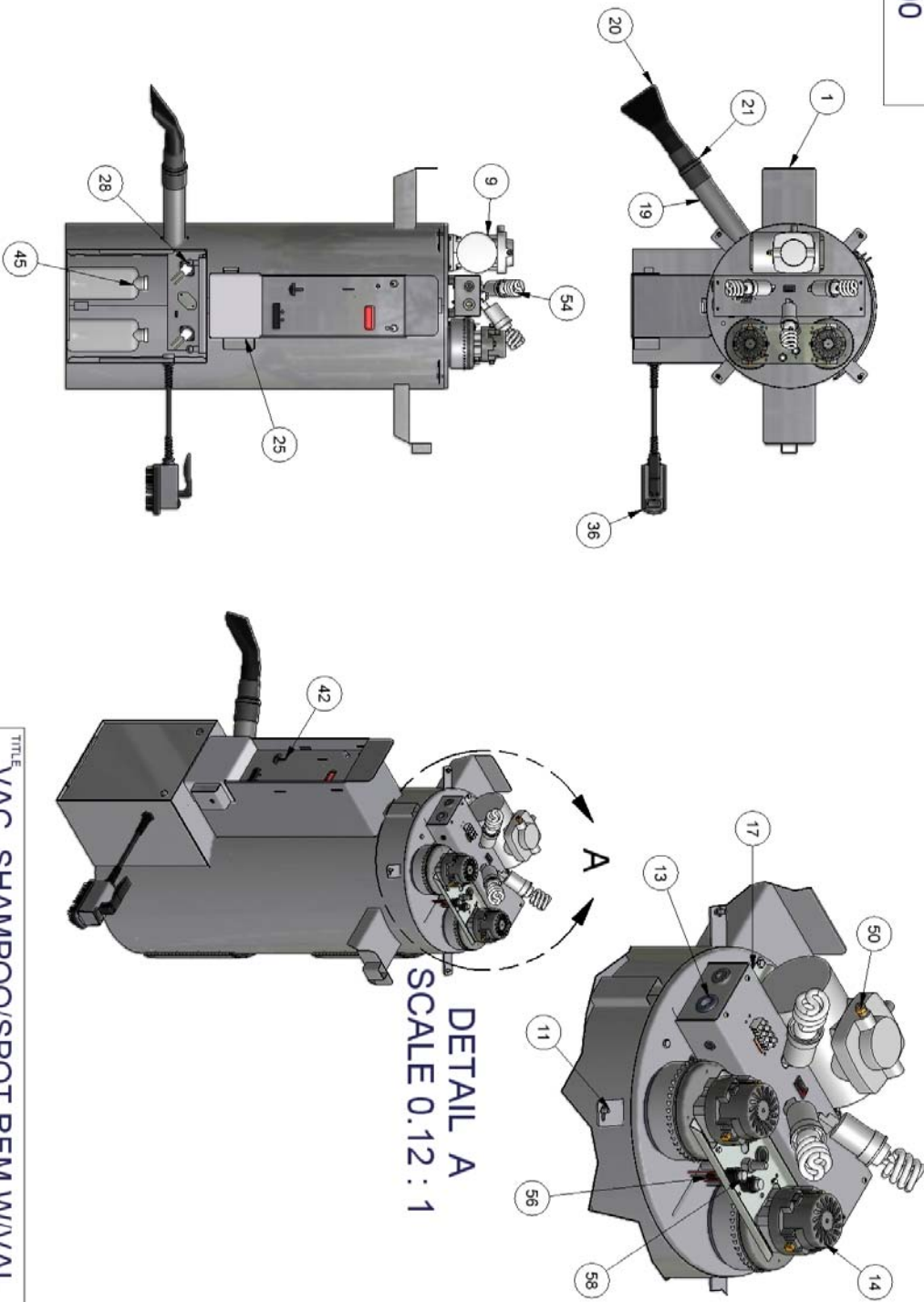
Vac motors will not shut off after display has timed out	Check contactor for vac and located in relay control box	If contact is stuck open replace with new contactor. (5967D001)
Shampoo/spot keeps running after display has timed out	Check surface mount relay labeled shampoo or spot for contact stuck.	If contact is stuck open replace with new relay(8768)
Unit has lost suction	<p>Vac hose clogged</p> <p>Filter bags need cleaned</p> <p>Vac hose is damaged</p> <p>Cleanout door gaskets torn or worn</p>	<p>Clean out debris from vac hose</p> <p>Clean out filter bags or replace (8076)</p> <p>Replace vac hose (2036)</p> <p>Replace gaskets (8159)</p>
Unit has shut down For no apparent reason	This unit has a reset thermal limiter in the compressor. Unit may have shut down due to excessive heat	Turn off power to the machine and wait for a period of 5 minutes. Reapply power and activate machine.



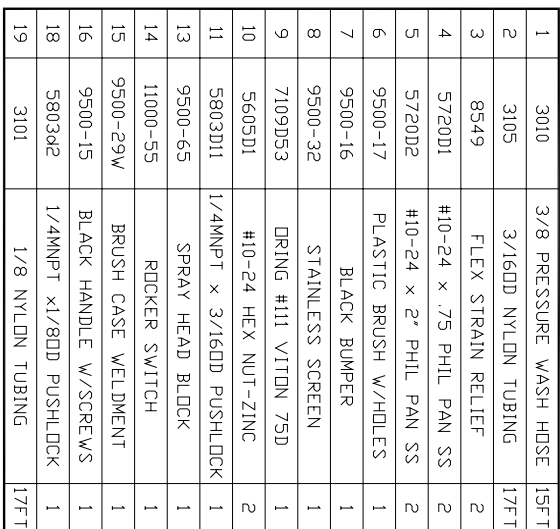
## 9

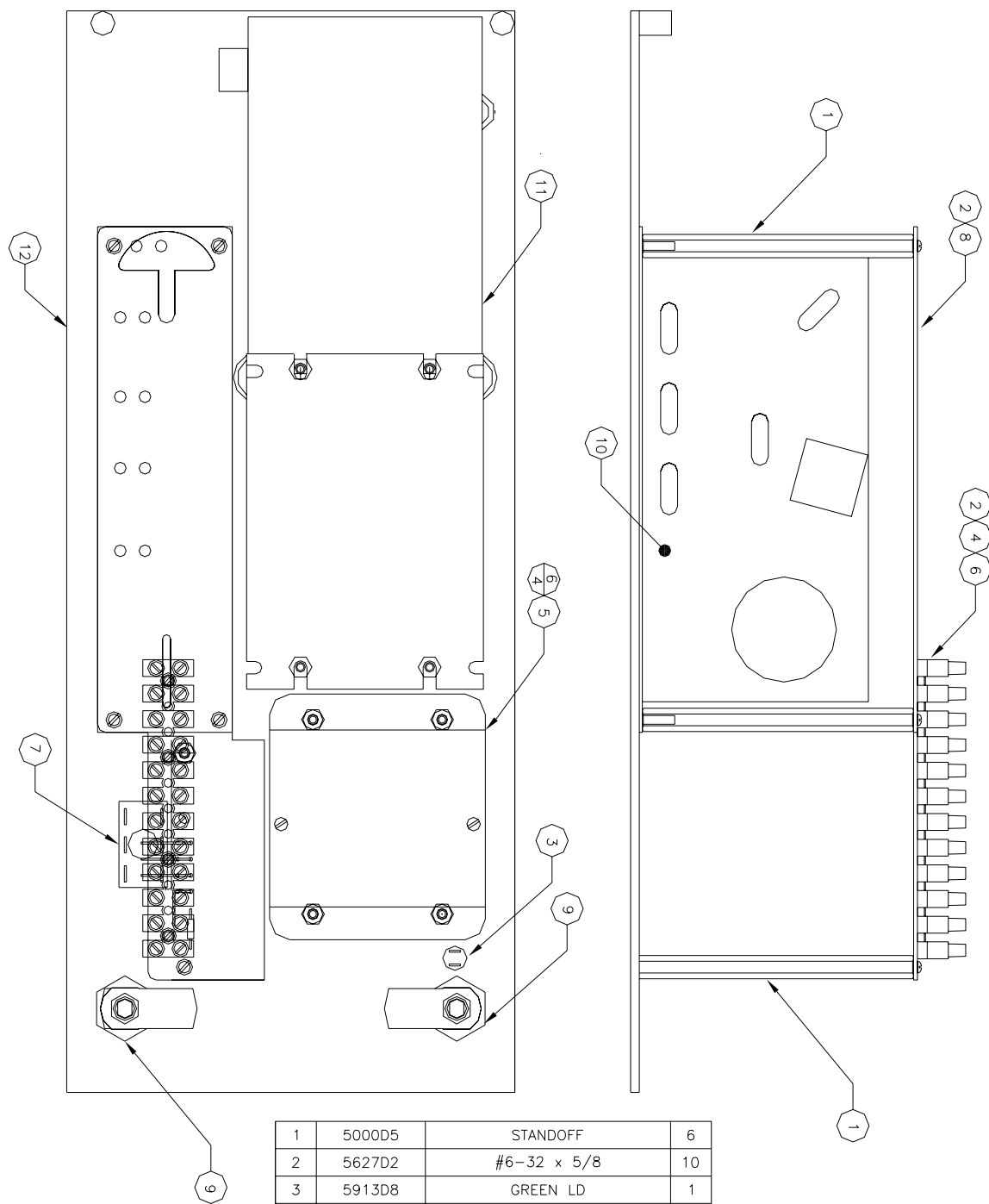
PART NO.	9500	BILL OF MATERIALS			BILL OF MATERIALS		
		ITEM	PART NUMBER	DESCRIPTION	QTY	ITEM	PART NUMBER
		41	8306	24" PLASTIC DOME	1	1	9500W
		42	9500-21A	9500 FACEPLATE	1	2	8104-1
		43	29000-29A-3	THOMAS PUMP ASSEMBLY, 9500	1	3	8104-2
		44	8843	DEBRIS FILTER	2	4	8549-1
		45	28000-40	PLASTIC CONTAINER	2	5	8076
		46	5602D1	NO. 10-24 HEX HEAD CAP SCREW	4	6	8159
		47	5611D2	NUT, 10-24 UNC KEPP. ZINC	4	7	8057
		48	5663D1	#8-32 x 1/2 PHILLIPS	4	8	5639D9
		49	8848	THERMOSTAT	1		
		50	5803D11	PUSHLOCK FITTING, 3/16 OD	1	9	8824
		51	5614D1	SCREW, #6-32	2	10	9500-19
		52	8847	FLEX HEATER	1	11	5601D1
		53	8055LEAD	WIRE LEAD, VAC MOTOR	4	12	5603D5
		54	8925	FLOURESCENT BULB	3	13	9500-11A
		55	5871B8	PLUG, VAC BOTTOM 2-1/2"	4	14	8055
		56	B5997-001	FUSE HOLDER, 10A MAX	2	15	8051G
		57	5639D1	RUBBER GROMMET	1	16	5603D11
		58	B5996-010	FUSE, 10AMP	2	17	9500-12A
		59	5627D2	Pan Head, Slotted 6-32 x 5/8	1	18	8108
		60	5606D7	FLAT WASHER, .160 ID X .500 OD	1	19	2036
		61	8157	NUT, #6-32 KEPP NUT STAINLESS	2	20	2056-BLACK
		62	8732	SERIAL TAG	1	21	2091
		63	8754	DECAL, GAS DISPENSING	1	22	8615-5W
		64	8182	DECAL, WARNING DISC POWER	2	23	8153-1
		65	3105	3/16" NYLON TUBING	45"	24	8204RW
		66	5943D322C	WIRE, 14G GRN/YEL	15"	25	8202W
		67	5901D4	WIRE NUT ORANGE	2	26	8206
		68	5900D4	WIRE TERMINAL, RED	4	27	8024
		69	5647D2	RIVET, 1/8 POP	16	28	8953
		70	5647D8	RIVET, 3/16 POP	14	29	9500SUM
		71	8000-25	WAGO WALL NUT	4	30	8802-1
		72	5902D7	RING TERMINAL, YELLOW	2	31	11000SPOT
		73	5902D1	RING TERMINAL, BLUE	1	33	9500-47
		74			1	36	11000-15
			PACKAGING		37	9500-201	
			PALET		40	8957VS	
		8605			1		
		5600D4	CARR BOLT, 3/8-16		4		
		5606D3	WASHER 3/8		4		
		B5722-002	NUT, LOCKNUT 3/8-16		4		
		6082	BAG		1		

TITLE		BILL OF MATERIALS	
VAC, SHAMPOO/SPOT REM W/VAL		DESCRIPTION	
		QTY	
		1	
		2	
		3	
		4	
		5	
		6	
		7	
		8	
		9	
		10	
		11	
		12	
		13	
		14	
		15	
		16	
		17	
		18	
		19	



				45		TITLE		UNSPECIFIED TOLERANCES		MATERIAL		CEDAR RAPIDS, IOWA	
						VAC, SHAMPOO/SPOT REM W/V/L							
G		5029		TRANSFER TO INVENTOR, REDESIGN UNIT		032609		JF		1 PL ± 0.030		SCALE	
REV		NO.		DESCRIPTION		DATE		BY		2 PL ± 0.010		DRAWN BY JOHN F.	
										3 PL ± 0.003		DATE 3/10/2009	
										ANGLE ± 1 °		PART NO. 9500	
												REV G	
THIS DOCUMENT SHALL NOT BE REPRODUCED NOR SHALL THE INFORMATION THEREIN BE USED BY OR DISCLOSED TO OTHERS EXCEPT AS AUTHORIZED BY J.E. ADAMS INDUSTRIES													





1	5000D5	STANDOFF	6
2	5627D2	#6-32 x 5/8	10
3	5913D8	GREEN LD	1
4	5944D003	TERMINAL STRIP	1
5	8131-8	DISPLAY LTT-802	1
6	5603D18	#6-32 NYLOC NUT	12
7	8849D002	DPDT SWITCH	1
8	8900-82	TERMINAL BRACKET	1
9	8953	LOCK W/KEYS	2
10	8149-92	IMONEX ELECTRONIC ACCEPTOR	1
11	8130-6	MARS VALIDATOR	1
12	9500-21W	FACEPLATE, SHAMPOO	1

